

COUNTRY GENERAL INFORMATION (WHO, 2015)

Total population:	34,378,000
Gender F / M (%):	50.6 / 49.4
Population, age group <15/≥15 years (%):	28 / 72
Life expectancy at birth (F/M, years) (2015):	75 / 73
GDP (PPP int \$):	7,000
Income status:	Lower middle
Number of 3 rd sub-national administrative level divisions, name:	1554, Commune

EPIDEMIOLOGY

	VL	ACL	ZCL	MCL
Endemicity status:	Endemic	Endemic	Endemic	Non endemic
Number of new cases (incidence):	83	1,863	946	N/A
Number of relapses ¹ :	3	No data	3	N/A
Total number of cases:	86	1,863	949	N/A
Imported cases (#, %):	2, 2%	0, 0%	0, 0%	No data
Gender distribution (% F):	39%	56%	54%	N/A
Age group distribution (% < 5/5-14/>14):	(67/18/14)	(41/30/30)	(31/31/38)	N/A
Incidence rate (cases/10,000 population in endemic areas):	0.67	3.04	73.88	N/A
Number of endemic 3 rd sub-national administrative level divisions:	84	292	64	N/A
Population at risk ² (% # at risk/total population):	4% 1,275,810/ 34,378,000	18% 6,130,393/ 34,378,000	4% 1,286,348/ 34,378,000	N/A
Was there any outbreak?	Yes	Yes	Yes	N/A
Number of new ³ foci:	0	2	1	N/A

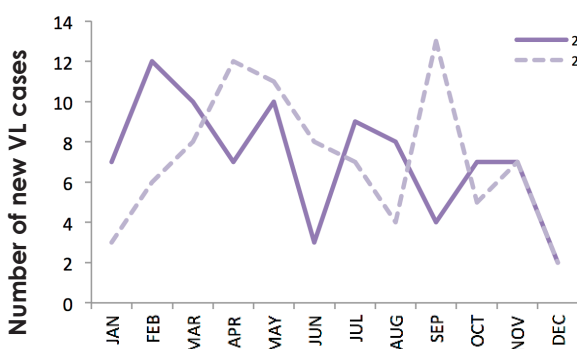
N/A = Not applicable; ¹ Relapse in this country is defined as: "Reappearance of clinical and biological symptoms after 21 days of treatment"; ² Defined as "Number of people living in 3rd sub-national administrative level endemic areas"; ³ Defined as "In this reporting period, an area at the 3rd sub-national administrative level reporting cases for the first time ever".

Monthly distribution of new cases (January-December)

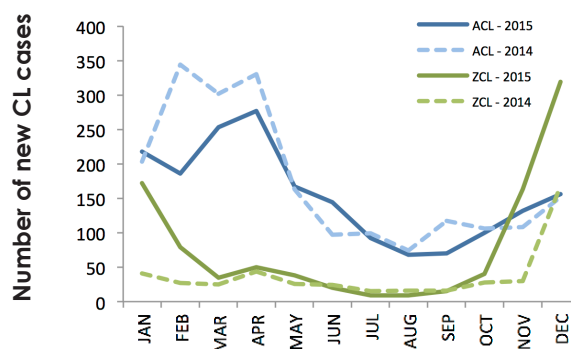
2015	JAN	FEB	MAR	APR	MAY	JUN	JUL	AUG	SEP	OCT	NOV	DEC
VL	7	12	10	7	10	3	9	8	4	7	7	2
ACL	218	186	253	277	167	144	92	68	70	100	132	156
ZCL	172	79	35	50	38	20	9	9	15	40	163	319

VL = visceral leishmaniasis; ACL = Anthroponotic cutaneous leishmaniasis; ZCL = Zoological cutaneous leishmaniasis; MCL = mucocutaneous leishmaniasis

Visceral leishmaniasis

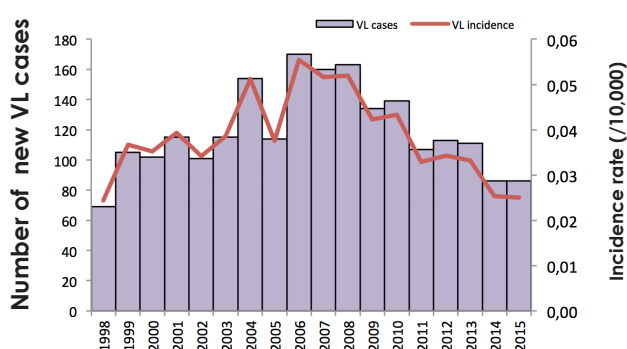


Cutaneous leishmaniasis

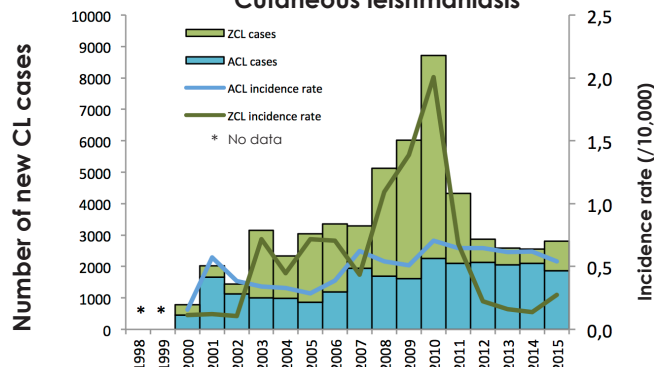


Incidence rate/10,000 (at the national level) and number of new cases from 1998 to 2015

Visceral leishmaniasis

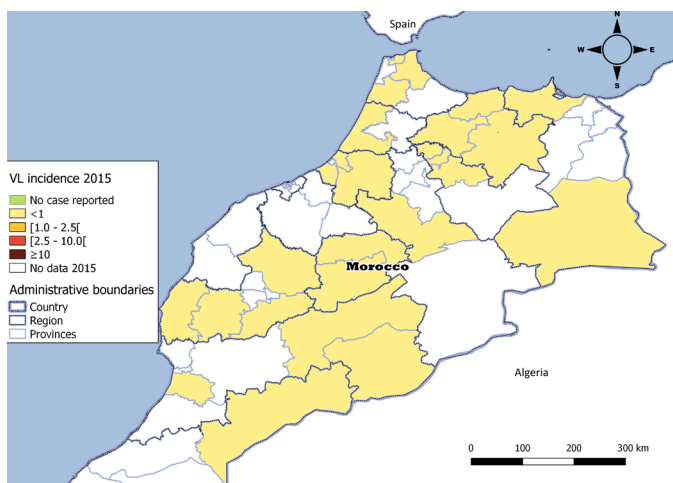


Cutaneous leishmaniasis



Disease distribution of new VL and CL cases at province level per 10,000 population (2015)

Visceral leishmaniasis

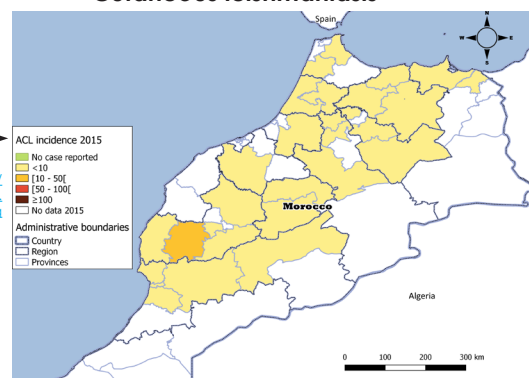


www.who.int/leishmaniasis/Map-VL-Morocco-2015.png

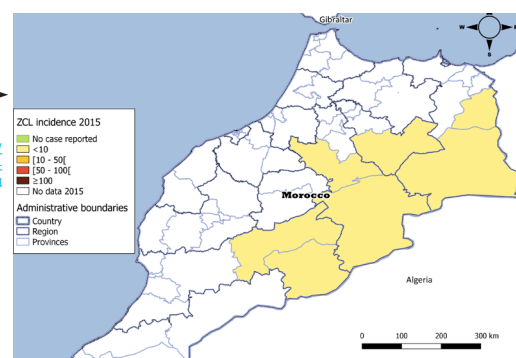
The boundaries and names shown and the designations used on these maps do not imply the expression of any opinion whatsoever on the part of the World Health Organization concerning the legal status of any country, territory, city or area or of its authorities, or concerning the delimitation of its frontiers or boundaries. Dotted and dashed lines on maps represent approximate border lines for which there may not yet be full agreement.

Map production: WHO/HIM/NTD/IDM

Cutaneous leishmaniasis



www.who.int/leishmaniasis/Map-ACL-Morocco-2015.png



www.who.int/leishmaniasis/Map-ZCL-Morocco-2015.png

CONTROL AND SURVEILLANCE

Year Leishmaniasis National Control Programme (LNCP) was established:	1997
Type of surveillance:	Integrated
Is there a vector control programme?	Yes
Type of insecticide used for Indoor residual Spraying (IRS):	Pyrethroids
Year latest national guidelines:	2010
Is leishmaniasis notifiable (mandatory report)?	Yes
Is there a reservoir host control programme?	Yes
Number of leishmaniasis health facilities:	35

DIAGNOSIS

	VL	ACL	ZCL	MCL
Number of people screened actively for:	3,000	715,000	310,000	N/A
Number of people screened passively for:	86	570,000	430,575	N/A
VL cases diagnosed by RDT* (% , # RDT+ / total VL cases):	No data	N/A	N/A	N/A
Proportion of positive RDT* (% , # RDT+ / total RDT):	No data	N/A	N/A	N/A
Cases diagnosed by direct exam* (parasitology) (% , # slides + / total cases):	No data	89%, (1666/1863)	23%, (222/946)	N/A
Proportion of positive slides* (% , # slides + / total slides):	No data	43%, (1666/3846)	47%, (222/474)	N/A
Cases diagnosed clinically* (% , # clinical cases / total cases):	4%, (3/83)	11%, (197/1863)	77%, (724/946)	N/A
Proportion of CL cases with lesions equal to or greater than 4 cm*:	N/A	No data	No data	N/A
Proportion of CL cases with 4 or more lesions* (% , # CL cases / total CL cases):	N/A	No data	No data	N/A
Percentage of cases with HIV coinfection*:	No data	N/A	N/A	N/A

VL = visceral leishmaniasis; ACL = Anthroponotic cutaneous leishmaniasis; ZCL= Zoological cutaneous leishmaniasis; MCL = mucocutaneous leishmaniasis
N/A = Not applicable; RDT = rapid diagnostic test; HIV = human immunodeficiency virus

TREATMENT AND MEDICINES

- ▶ Is treatment provided for free in the public sector? **Yes**
- ▶ Antileishmanial medicines included in the National Medicine List: **Meglumine antimoniate**

TREATMENT OUTCOME	VL	ACL	ZCL
Proportion of cases treated (% , # treated cases / total cases):	100%, (83/83)	100%, (1863/1863)	100%, (946/946)
Initial cure rate(% , # cases initially cured /total cases):	95%, (79/83)	100%, (1862/1863)	100%, (945/946)
Failure rate ⁴ (% , # patients with treatment failure /total cases):	1%, (1/83)	No data (0/1863)	0%, (1/946)
Case fatality rate (% , # patients who died / total cases):	4%, (3/83)	No data (0/1863)	No data (0/946)

VL = visceral leishmaniasis; ACL = Anthroponotic cutaneous leishmaniasis; ZCL= Zoological cutaneous leishmaniasis

⁴ Failure in this country is defined as: "Persistence of clinical and biological symptoms during treatment"

* These indicators only apply for new cases